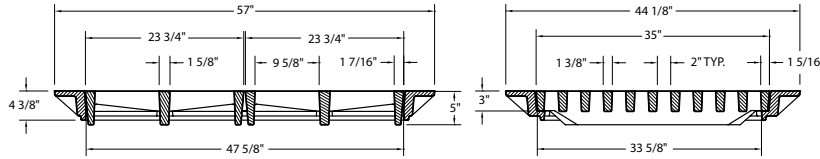


■ Note: When specifying/ordering grates, refer to "Choosing the Proper Inlet Grate" on pages 125-126.
 For a complete listing of FREE OPEN AREAS and WEIR PERIMETERS of all NEENAH grates, refer to pages 327-332.

R-3475-F
Airport Drainage Inlet, Double Ductile Iron Grate

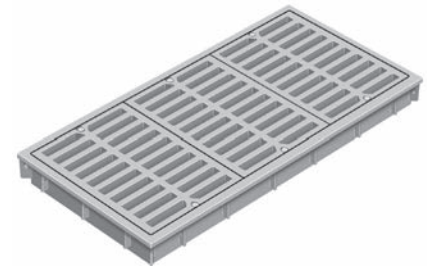
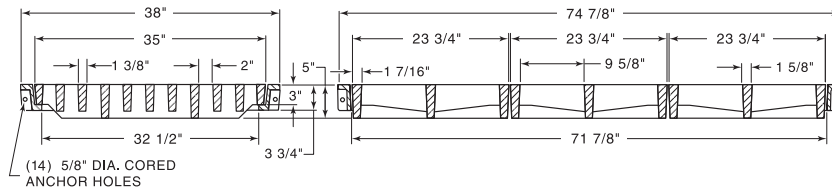


Grates are bolted to frames.

| CATALOG NUMBER | GRATE TYPE | SQ. FT. OPEN | WEIR PERIMETER LINEAL FEET |
|----------------|------------|--------------|----------------------------|
| R-3475-F | C | 4.8 | 13.8 |

Each grate has a free open area of approximately 2.4 sq. ft.
 Features easy to install one-piece frame.

R-3475-G
Airport Drainage Inlet, Triple Ductile Iron Grate

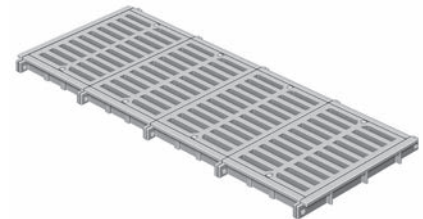
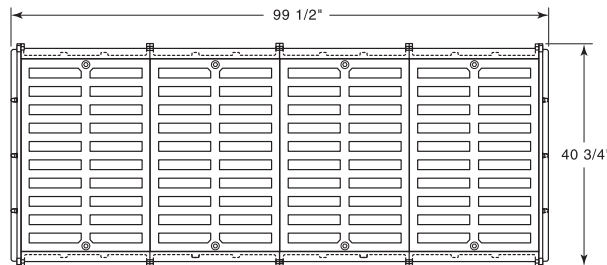


Grates are bolted to frames.

| CATALOG NUMBER | GRATE TYPE | SQ. FT. OPEN | WEIR PERIMETER LINEAL FEET |
|----------------|------------|--------------|----------------------------|
| R-3475-G | C | 7.2 | 17.8 |

Each grate has a free open area of approximately 2.4 sq. ft.
 Features easy to install one-piece frame.

R-3475-H
Airport Drainage Inlet, Quad Ductile Iron Grate



Grates are bolted to frames.

- NOTE:**
- 1-CLEAR OPENING IS 32" x 96"
 - 2-FRAME HEIGHT IS 3 3/4"
 - 3-USE SAME GRATES AS R-3475-G

Each grate has a free open area of approximately 2.4 sq. ft.
 Frame/Grate units can be combined for longer length runs if specified.

| CATALOG NUMBER | GRATE TYPE | SQ. FT. OPEN | WEIR PERIMETER LINEAL FEET |
|----------------|------------|--------------|----------------------------|
| R-3475-H | C | 9.6 | 21.8 |

Supplied By:

TRENCHDRAIN SUPPLY

877-903-7246

www.trenchdrainsupply.com

CLICK HERE to return to the Table of Contents